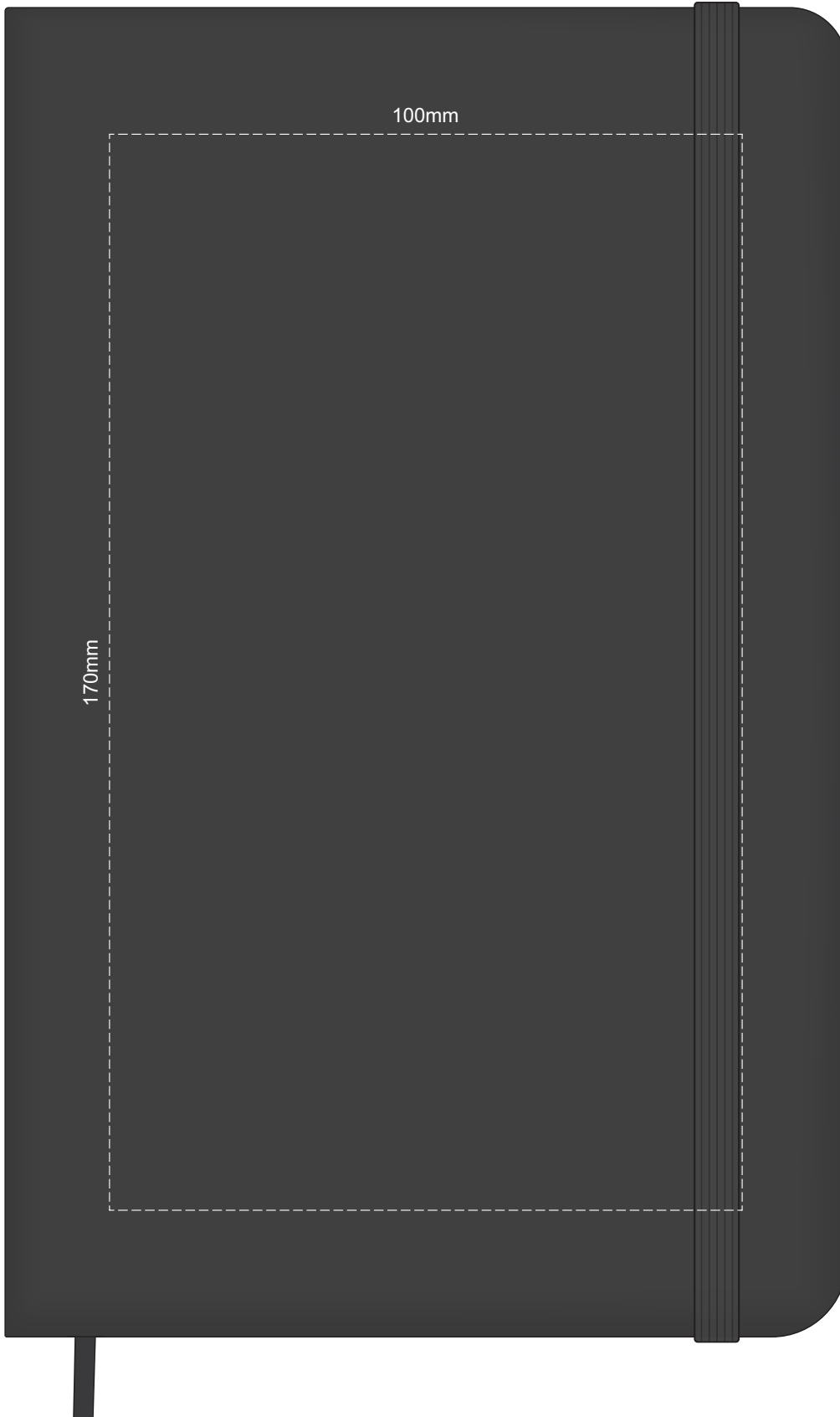


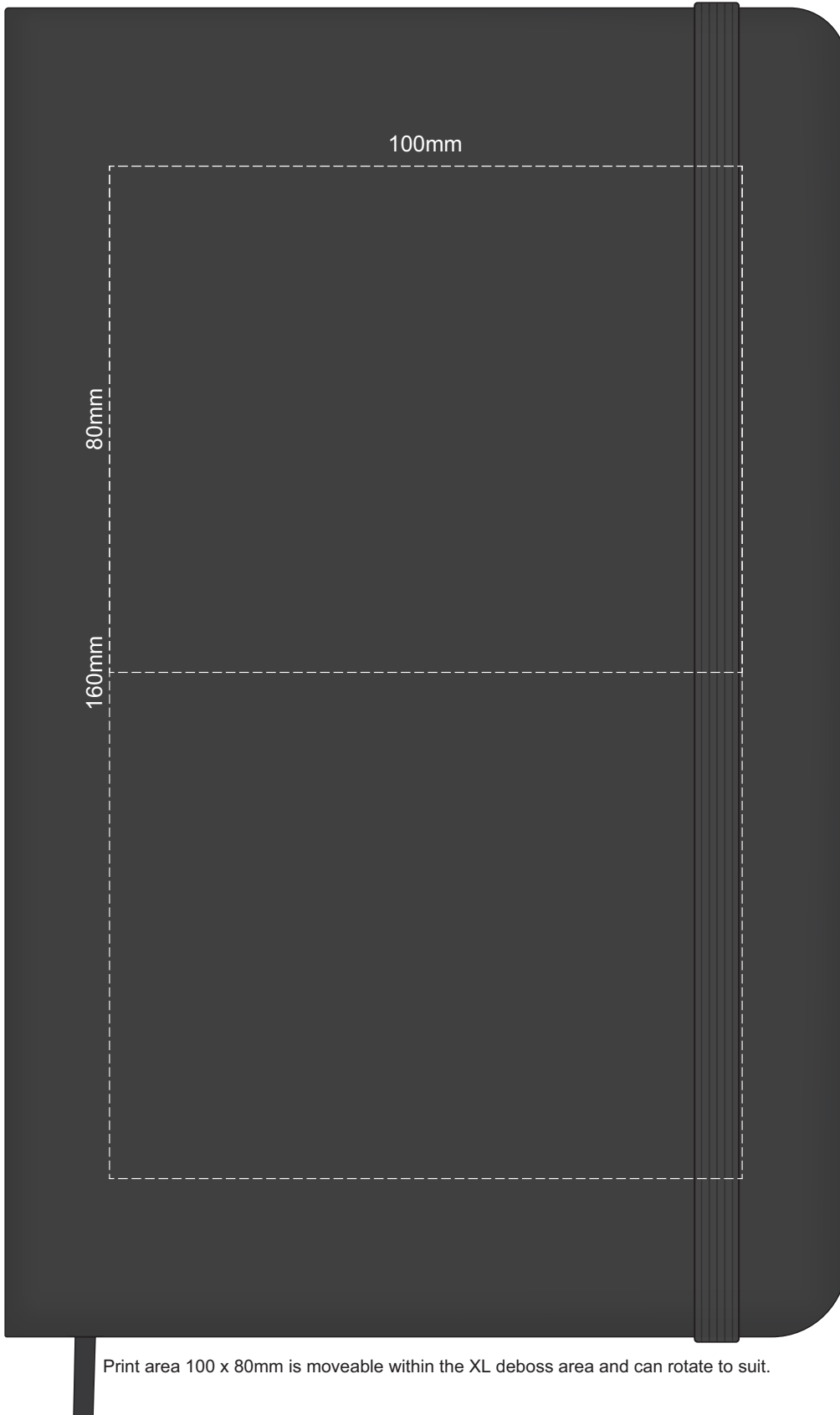
100% of Actual Size
Screen Print (one colour)



Reef Blue

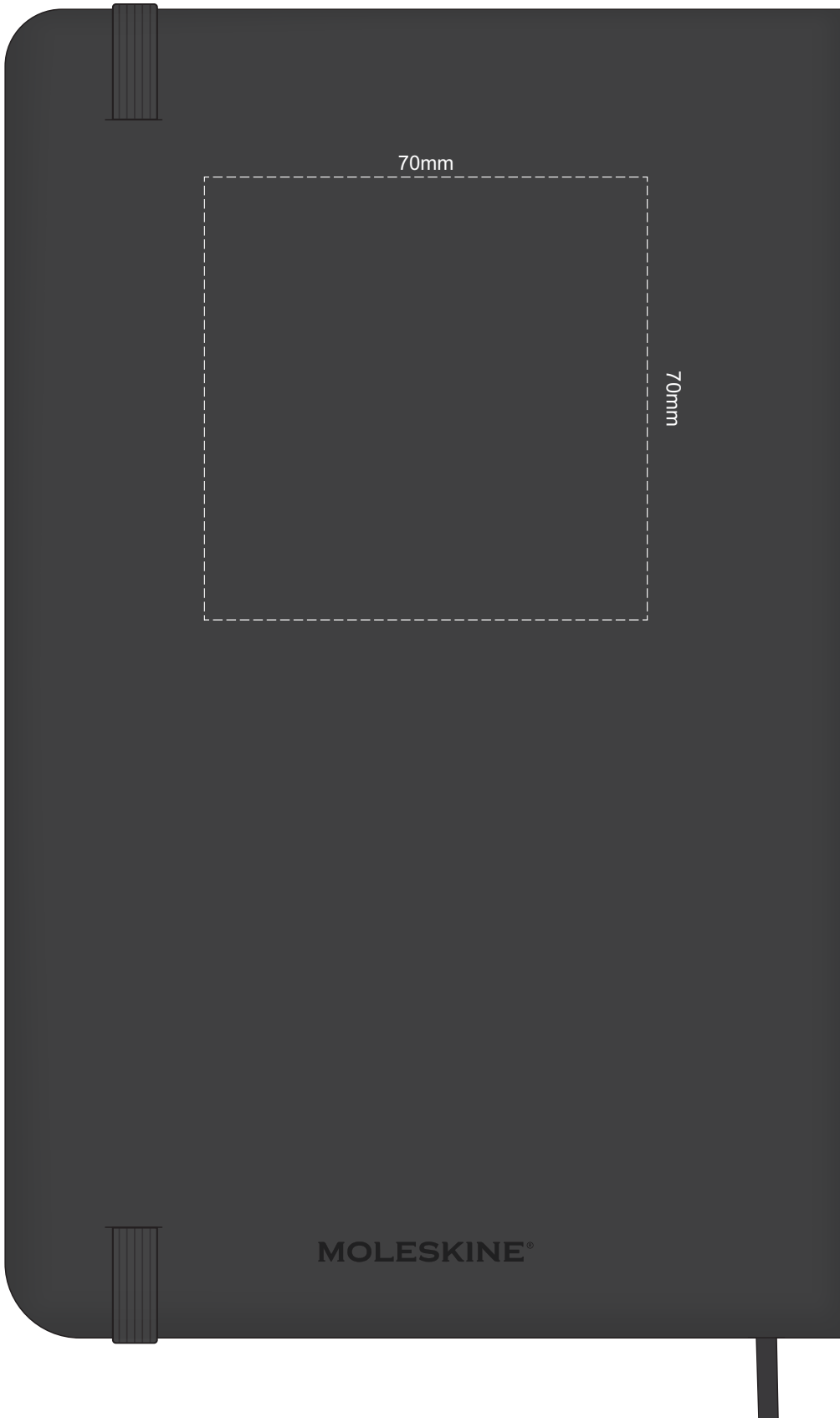
Prussian Blue

100% of Actual Size
Debossing Front Cover
Debossing XL Front Cover



Print area 100 x 80mm is moveable within the XL deboss area and can rotate to suit.

100% of Actual Size
Debossing Back Cover

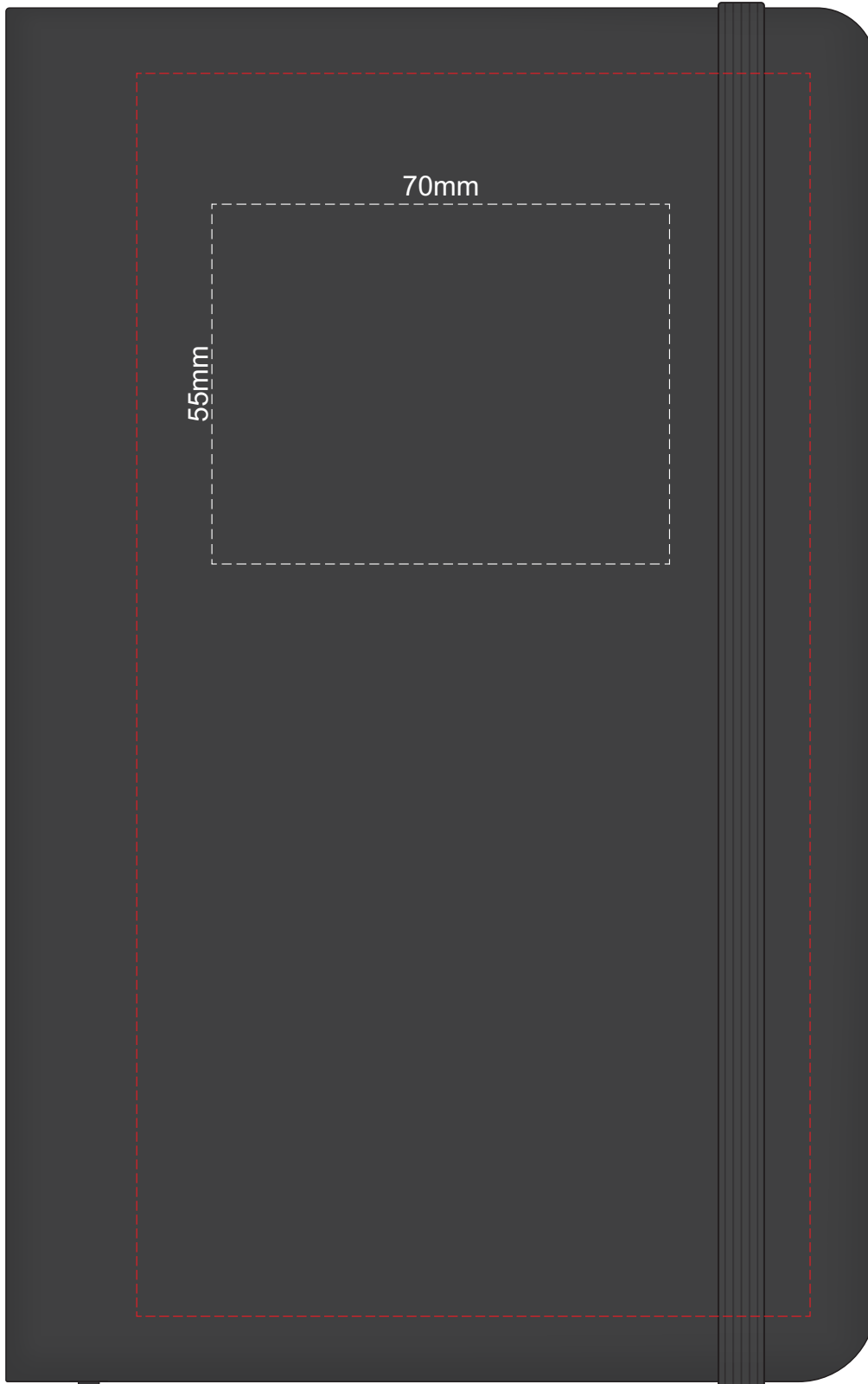


Reef Blue

Prussian Blue



100% of Actual Size
Foil Printing Front Cover
FRONT ONLY



Please note: Print area 70mm x 55mm is **moveable within the red dotted area**, the print area cannot be rotated. The printing will inherit the texture of the substrate which may affect the legibility of small text or appearance of fine detail.





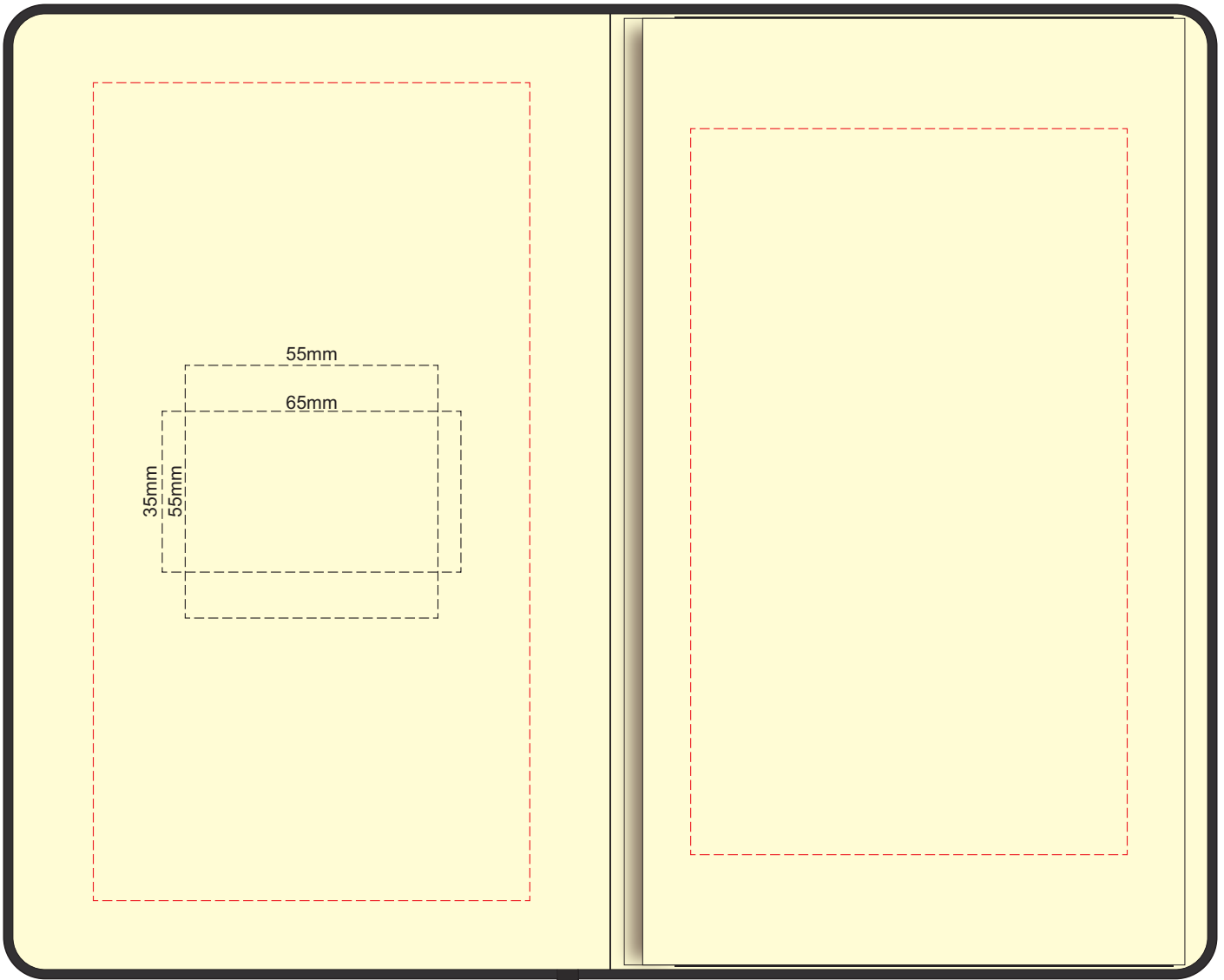
70% of Actual Size
Pad Print Front End-Paper

A diagram of a pad print front end-paper, shown as a yellow rounded rectangle with a black border. The left side is divided by a vertical line. On the left side, there is a large red dashed rectangle representing the branding area. Inside it are two smaller dashed rectangles: an inner one with a width of 55mm and a height of 35mm, and an outer one with a width of 65mm and a height of 55mm. At the bottom of the left side, there is a small logo consisting of the letter 'M' followed by a 3x3 grid of squares. On the right side, there is a form for return information. It starts with the text 'In case of loss, please return to:' followed by four horizontal lines for an address. Below that is the text 'As a reward: \$' followed by a horizontal line for a reward amount. At the bottom of the right side, there is a large red dashed rectangle representing a return address or contact information area.

Branding area can be moved anywhere within the red lines.



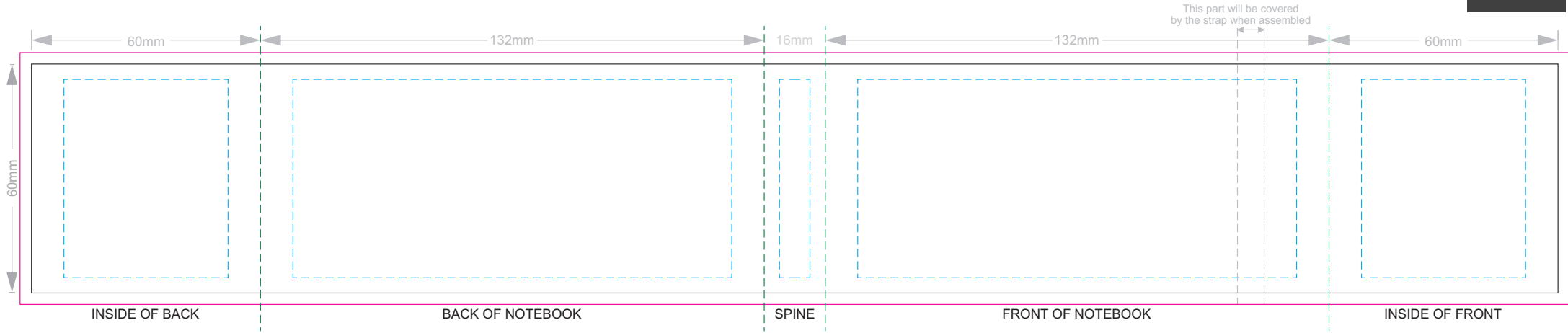
70% of Actual Size
Pad Print Back End-Paper



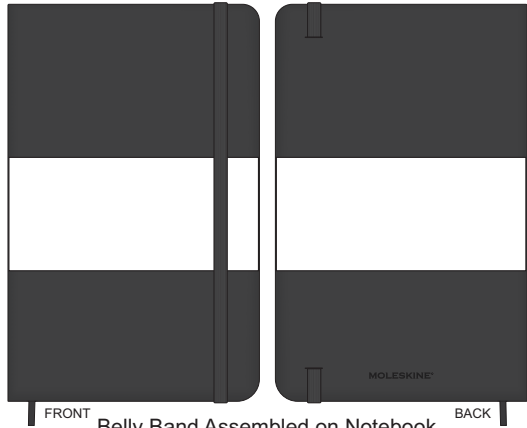
Branding area can be moved anywhere within the red lines.



70% of Actual Size
Digital Print - Belly Band Template



25% of Actual Size



FRONT Belly Band Assembled on Notebook BACK

Please note that some of the artwork will be covered by the notebook closure strap when assembled.

- Green Line = Fold Lines when assembled on notebook
- Blue Line = The SIGNIFICANT PRINT AREA
(Keep all critical images & text within this box)
- Black Line = Maximum print area
- Pink Line = Bleed off to here